

Quick Start Guide

1. Install ProScan Software

Insert the ProScan CD into your PC's CD-ROM drive. Installation should begin automatically. If installation does not begin, click **Start** → **Run**, and type "D:\setup.exe" (where D is the drive letter of your CD-ROM drive), and click OK.

ProScan requires that your PC have the Microsoft .NET Framework installed. If your PC doesn't have the latest version of the .NET Framework installed, you should elect to install the .NET Framework when prompted to do so.

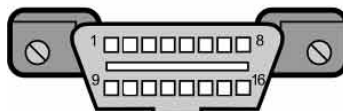
Follow the on-screen instructions to complete installation.

2. Install USB Drivers

If your hardware interface is supplied with a USB cable, follow the instructions on the reverse side to install the required drivers. If your interface uses a serial cable, you can skip this step.

3. Connect Interface to Vehicle's DLC

The 16-pin diagnostic link connector (DLC) should be located under the dashboard within 3-feet of the steering column. Connect the OBD-II cable from the DLC to the interface module. The Power LED on the interface module should light up.



4. Connect PC to Interface

Depending on the model of your interface, use the supplied serial or USB cable to connect the interface module to your PC's 9-pin serial port or USB port, respectively.

5. Launch the ProScan Software

Run ProScan by selecting it from the Start menu or by using the desktop icon. Clicking the Connect button will attempt to establish a connection with the vehicle.

6. Read the User's Manual

Before attempting to use ProScan you should read the user's manual. The user's manual can be accessed from within ProScan via the Help menu, or it can be browsed from our web site.

Contacting Technical Support

Online Support Site: <http://www.myscantool.com/support>
Technical Support E-Mail: support@myscantool.com

Visit our web site frequently for important news and free software upgrades!

<http://www.MyScanTool.com>

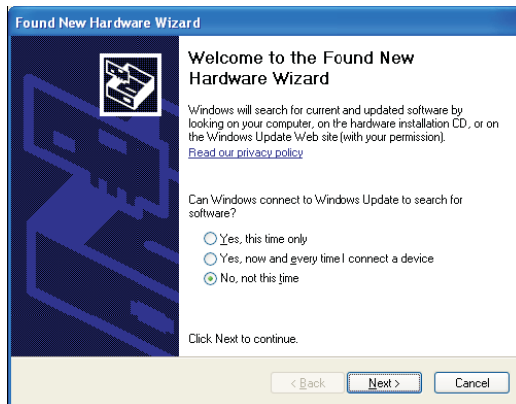
Installing the USB Drivers

1. Introduction

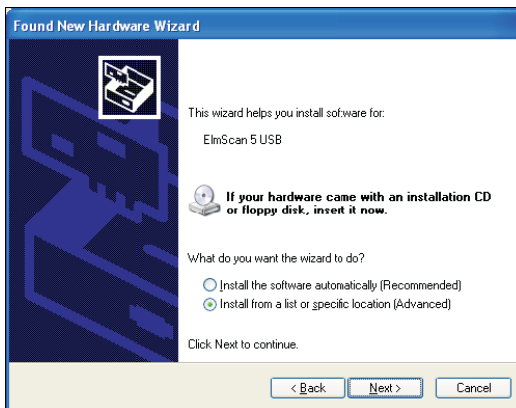
Scan tool interfaces supplied with a USB cable rely on a chip provided by Future Technology Devices International Ltd (FTDI), which installs under the Windows operating system as a Virtual COM port.

2. Installing the USB Drivers

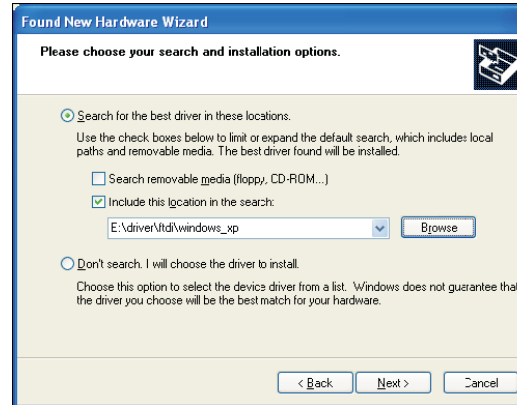
Once the scan tool interface is connected and powered up, Windows will display the New Hardware Found Wizard:



Select “No, not this time” and click “Next”.



Select “Install from a list or specific location (Advanced)” and click “Next”.



Select “Search for the best driver in these locations”, then check “Include this location in the search” and enter the path to the driver in the combo box, or browse to it by clicking the “Browse” button.

USB Driver Locations on ProScan Install Disk:
(* Assuming CD-ROM drive letter is D)

Windows XP: D:\driver\ftdi\windows_xp
Windows 2000: D:\driver\ftdi\windows_2000
Windows ME: D:\driver\ftdi\windows_me
Windows 98: D:\driver\ftdi\windows_98

Click “Next” to proceed. Once Windows is done copying the required drivers, click “Finish”.

3. Repeat for Emulation Drivers

The New Hardware Wizard will launch for a second time to install the COM port emulation drivers. Simply repeat the steps outlined above to install the drivers.

4. Verifying Installation

Click on **Start** → **Control Panel**, then double-click the **System** icon. (If the **System** icon is not visible, click on the “Switch to Classic View” link).



Click the “Hardware” tab, and then click the “Device Manager” button.



Find the **Ports (COM & LPT)** node in the device manager tree, and click on the plus sign to expand it.



If the drivers were successfully installed, you will see an entry labeled “USB Serial Port (COMx)” where the “x” denotes the COM port number assigned. Write this number down as you will need to configure the ProScan software to use this COM port. See the User’s Manual for more information.